



iStartStrong™ Report

Your Career Information Powered by the
Strong Interest Inventory® Assessment

Report prepared for
JANE SAMPLE

3.22.2012

Developed by Judith Grutter



CPP, Inc. | 800-624-1765 | www.cpp.com

iStartStrong™ Report Copyright 2011 by CPP, Inc. All rights reserved.

iStartStrong, *Strong Interest Inventory*, the Strong logo, and the CPP logo are trademarks or registered trademarks of CPP, Inc., in the United States and other countries.

Your STRONG Results

You recently completed the *Strong Interest Inventory*® assessment online, and here are your results! This report is based on your answers to 291 questions about what you like to do—your *interests*. Your interests suggest a lot about your personality in general, as well as about career fields and educational programs you might enjoy.

Your results will give you a great deal of information to help you make informed decisions about your future:

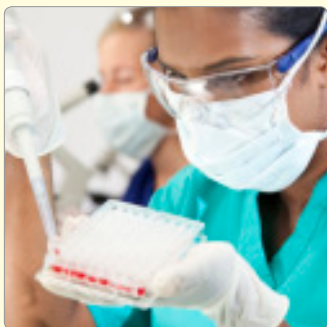
- Careers that reflect your interests
- Possible education and training programs
- Satisfying work environments
- Enjoyable activities for your free time

The report provides your *Strong* results and links to additional information. Read about your top General Themes and Specific Interests first, then explore the other Themes and interest areas listed to find more career fields you might like to learn about.



General Themes

describe your personality and potentially satisfying work environments.



Specific Interests

narrow the General Themes into interest areas related to career fields, occupations, education and training, and activities you would likely find rewarding.

Your General Themes

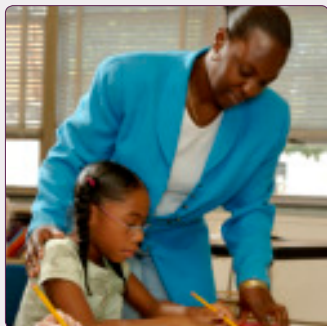
The *Strong* uses six General Themes to describe your personality and the kinds of work environments you might find satisfying. Many people find that a combination of two Themes describes them well. You are likely to enjoy work environments that closely correspond to your top Themes.

Your Top Themes

SOCIAL & ARTISTIC

You probably would like work environments where you can help and teach others using your creativity.

Click the links below to learn more about your top Themes.



SOCIAL people are helpers!

You like to help, nurture, and care for others.

[Learn More](#)



ARTISTIC people are creators!

You like to express your creativity either by doing art yourself or by appreciating the creativity of others.

[Learn More](#)

Up to now you've been exploring your top two Themes. The other four Themes are listed here in your order of interest. The farther down the list a Theme is, the less likely it is to attract you. Just as before, each Theme links to more information. Click the links even if you are pretty sure the Themes don't describe you to see if the additional information may be useful. Think of people you know who seem to fit the descriptions. Knowing about a range of careers and work environments will help you see where you do and don't fit in.



ENTERPRISING people are persuaders!

They like to lead and influence others.

[Learn More](#)



CONVENTIONAL people are organizers!

They like to collect and manage information.

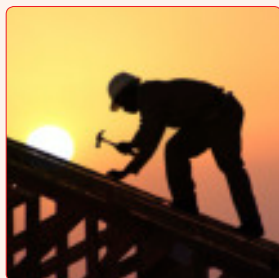
[Learn More](#)



INVESTIGATIVE people are thinkers!

They like to analyze and interpret data.

[Learn More](#)



REALISTIC people are doers!

They like to use coordination and physical strength.

[Learn More](#)

The next section of your report suggests Specific Interests that may or may not be related to your General Themes. The Themes describe you in a very broad way, identifying personality traits and characteristics of potentially satisfying work environments. Your Specific Interests indicate particular things you are likely to enjoy doing.

Your Specific Interests

In addition to the 6 General Themes, the *Strong* gives you information on 30 Specific Interests and how you rated them. You can use your top interests to explore career fields, school subjects and college majors, training programs, outside activities—anything that reflects what you like to do. Although liking something doesn't guarantee you will be good at it, you are more likely to be better at things you like to do than at things you don't enjoy.

Your Top 5 Specific Interests

RELIGION AND SPIRITUALITY
 COUNSELING AND HELPING
 TEACHING AND EDUCATION
 WRITING AND MASS COMMUNICATION
 POLITICS AND PUBLIC SPEAKING

Use the links below to learn more about your top five Specific Interests, and mark anything that you would like to learn more about.



RELIGION AND SPIRITUALITY

Your interest in this area suggests that you would enjoy attending to people's spiritual, personal, and emotional needs, especially through organized religious activities. The work often involves conducting religious worship, providing spiritual and moral guidance, and performing spiritual functions associated with beliefs and practices of a religious faith or denomination.

[Areas of Study](#) | [Career Fields](#) | [Activities](#)

Related Occupations

[Clergy](#)
[Community and Social Service Specialist](#)
[Director of Religious Education](#)
[Family Social Worker](#)
[Philosophy and Religion Teacher](#)
[Religious Worker](#)



COUNSELING AND HELPING

Your interest in this area suggests that you would enjoy helping others overcome difficulties. The work often involves counseling individuals, groups, and families; developing and implementing treatment plans; providing crisis intervention; and maintaining records and preparing reports.

[Areas of Study](#) | [Career Fields](#) | [Activities](#)

Related Occupations

[Mental Health Counselor](#)
[Psychiatric Technician](#)
[Psychologist](#)
[Residential Advisor](#)
[School Counselor](#)
[Social Worker](#)



TEACHING AND EDUCATION

Your interest in this area suggests that you would enjoy teaching young people with considerable student-teacher interaction. Typical work tasks include instructing through lectures, discussions, and demonstrations, preparing materials for classroom activities, evaluating students' performance, and conferring with parents and other teachers.

[Areas of Study](#) | [Career Fields](#) | [Activities](#)

Related Occupations

[Child Care Worker](#)
[Elementary School Teacher](#) or
[Secondary School Teacher](#)
[Preschool Teacher](#)
[School Principal](#)
[Special Education Teacher](#)
[Teacher's Aide](#)



WRITING AND MASS COMMUNICATION

Your interest in this area suggests that you would enjoy literature, reading, and language. Typical work tasks include originating and preparing written material, writing advertising copy, planning public relations campaigns, teaching courses in comparative literature and linguistics, reporting and writing stories, and writing technical materials.

[Areas of Study](#) | [Career Fields](#) | [Activities](#)

Related Occupations

[Copy Writer](#)
[English Teacher](#)
[Public Relations Director](#)
[Reporter](#)
[Technical Writer](#)
[Translator](#)



POLITICS AND PUBLIC SPEAKING

Your interest in this area suggests that you would enjoy influencing people's thoughts and viewpoints. Typical work tasks range from campaigning for office to making speeches, drafting legislative proposals, following government policy decisions, and forecasting political trends.

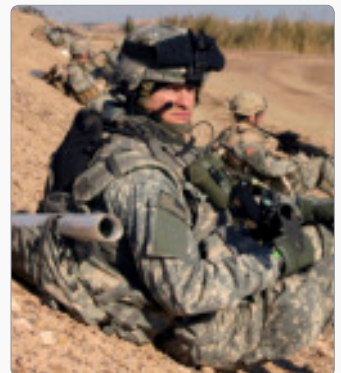
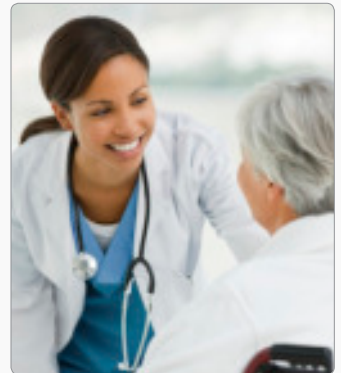
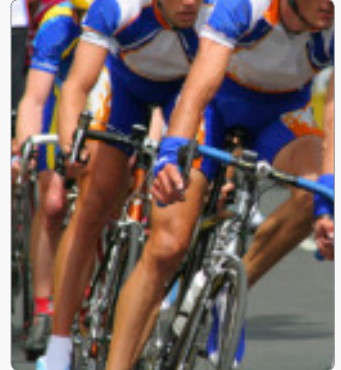
[Areas of Study](#) | [Career Fields](#) | [Activities](#)

Related Occupations

[Announcer](#)
[Communications Teacher](#)
[Historian](#)
[History Teacher](#)
[Legislator](#)
[Political Scientist](#)

Now that you have read about your top 5 Specific Interests, review the other 25 Specific Interests, listed below in order from most to least appealing to you. Check out any that you're curious about by clicking its name.



- Culinary Arts
- Human Resources and Training
- Office Management
- Social Sciences
- Management
- Performing Arts
- Nature and Agriculture
- Marketing and Advertising
- Research
- Athletics
- Mathematics
- Military
- Finance and Investing
- Sales
- Science
- Medical Science
- Healthcare Services
- Law
- Computer Hardware and Electronics
- Taxes and Accounting
- Mechanics and Construction
- Entrepreneurship
- Visual Arts and Design
- Protective Services
- Programming and Information Systems



The next section provides a summary of your results and suggested next steps in your career exploration.

Your STRONG Summary

General personality characteristics—your General Themes—and what you like to do—your Specific Interests—are very important in identifying potential work environments, areas of study, career fields, and activities. Here again are your top Themes and Interests.

 <p>SOCIAL Helping others</p>	RELIGION AND SPIRITUALITY
 <p>ARTISTIC Expressing creativity</p>	COUNSELING AND HELPING
	TEACHING AND EDUCATION
	WRITING AND MASS COMMUNICATION
	POLITICS AND PUBLIC SPEAKING

Congratulations! By completing the *Strong Interest Inventory* assessment you have taken a key step in planning your future. You've learned about work environments that are a good fit for your personality and specific things you might like to do based on your interests. The more you know about yourself and careers, the more useful and targeted information you'll have for making decisions. Consider speaking with a career counselor or advisor about an expanded interpretation of your *Strong* results.

In addition, explore some career resources on your own. Here are a few on the Web to get you started.

- Descriptions of jobs and projected openings: [Occupational Outlook Handbook](#)
- Career information by school subject: [Bureau of Labor Statistics](#)
- Career information linked to General Themes: [O*NET](#)

And talk to people—people you know, people you know who know people—anyone who can give you firsthand information about jobs and career paths. You can find people through college and university alumni offices, professional associations, online networking groups, and local and regional career centers. Many people will let you “shadow” them while they do their work. This is a terrific way to find out what a job is really like. Good luck!

