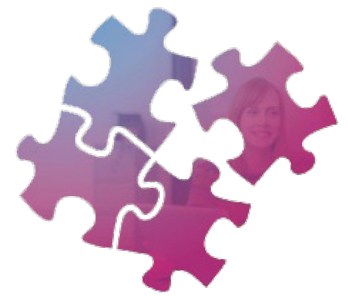


ACER Select

General Numerical



PREPARED FOR J. Sample

DATE OF TESTING January 1, 2026

COMPARISON GROUP Retail

ACER Select is designed to measure verbal and numerical abilities as demonstrated by the capacity to see relationships and solve problems. The assessments are primarily intended as a measure of general ability for selection into occupations that involve a moderate to high level of demand on reasoning ability, and for other purposes where the ability to think clearly with words and numbers is involved.

ACER Select General is intended for recruitment purposes that involve high stakes decision making for positions that require a moderate level of reasoning ability and problem solving.

16

TOTAL RAW SCORE

The total raw score is the number of correct answers the candidate made on this test. This candidate scored **16** correct out of a maximum of 24.

Questions attempted: 20

83

PERCENTILE RANK

Percentile ranks show the percentage of the comparison group with scores at or below the candidate's score. The candidate's percentile rank of **83** means that the candidate has performed better than **83%** of the individuals in the chosen comparison group. See graph below.

7

STANINE

Stanines are interval scores that rank candidates from a low of 1 to a high of 9. This candidate's score places them in stanine **7** of the chosen comparison group.



Retail

The candidate's performance when compared to individuals in the chosen comparison group.

All Candidates

The candidate's performance when compared to individuals in the All Candidates comparison group.